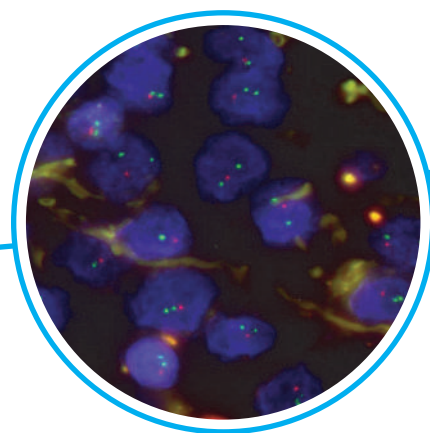
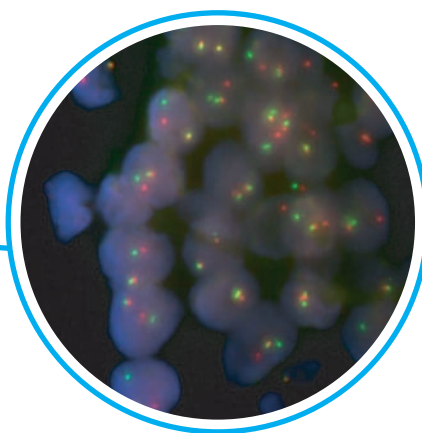
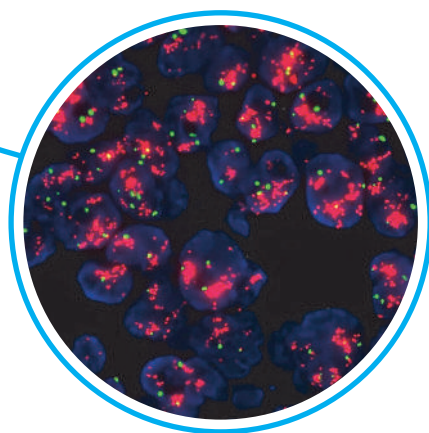




- Capacity for **42 determinations** in independent reaction chambers.
- Complete pretreatment kits and **"ready to use"** probes.
- Innovative probe dispensing and extension system that allows complete tissue coverage and homogeneous, high-quality hybridization.
- Validated protocols with calibrated reagents to provide high analytical sensitivity and specificity.
- Simplicity and easy use.
- Fully automatic system cleaning.

Automation of Fluorescent "In situ" hybridization (**FISH**)



Automation of Fluorescent "In situ" hybridization (FISH)

SARCOMAS AND GLIOMAS

EWSR1 Break Apart
FOXO1 Break Apart
MDM2/CEN12
FUS Break Apart
SS18 Break Apart
DDIT3 (CHOP) Break Apart
1p36/1q25
19q13/19p13

ONCOHEMATOLOGY

BCL2 Break Apart
BCL6 Break Apart
CCND1 Break Apart
MYC Break Apart
IGH Break Apart
MALT1 Break Apart

BREAST

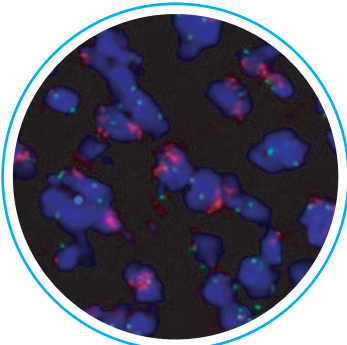
HER2 (17q12)/CEN17

OTHER SOLID TUMORS

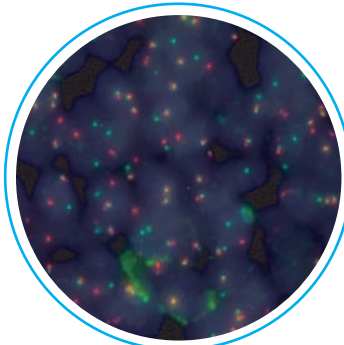
TFE3 Break Apart

LUNG

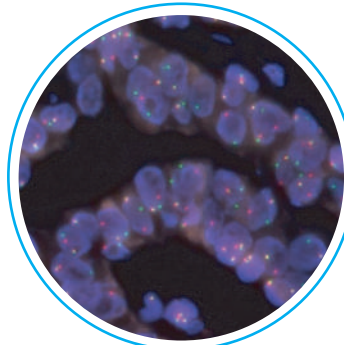
ALK Break Apart
ROS1 Break Apart
MET/CEN7



Undifferentiated liposarcoma with amplification of the MDM2 gene



Follicular lymphoma with BCL2 translocation



Renal carcinoma associated with the Xp 11.2 translocation in a female patient

We also offer the possibility of performing semi-automatic FISH, completing the panel of solid tumor probes.



www.vitro.bio

C/ Luis Fuentes Bejarano 60 Ed.
Nudo Norte (local3) 41020 Sevilla
Teléfono: +34 954 93 32 00
sales@vitro.bio
www.vitro.bio