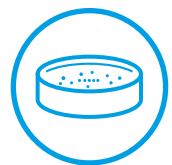


- Other solutions -

Kits based on one-step Multiplex RT-PCR plus reverse hybridization on a chip. DNA-Flow technology for hybriSpot platforms:

- RESPIRATORY FLOW CHIP KIT REF:MAD-003939M-HS

- CHARACTERISTICS OF THE KIT -



Automatic hybridization in macroarray with specific oligo probes



Extracted DNA/RNA

- ✓ Nasopharyngeal and oropharyngeal exudates
- ✓ Bronchoalveolar lavage (BAL)



¡EASY TO USE! Lyophilized monotest format



Successful participation in QCMD programs

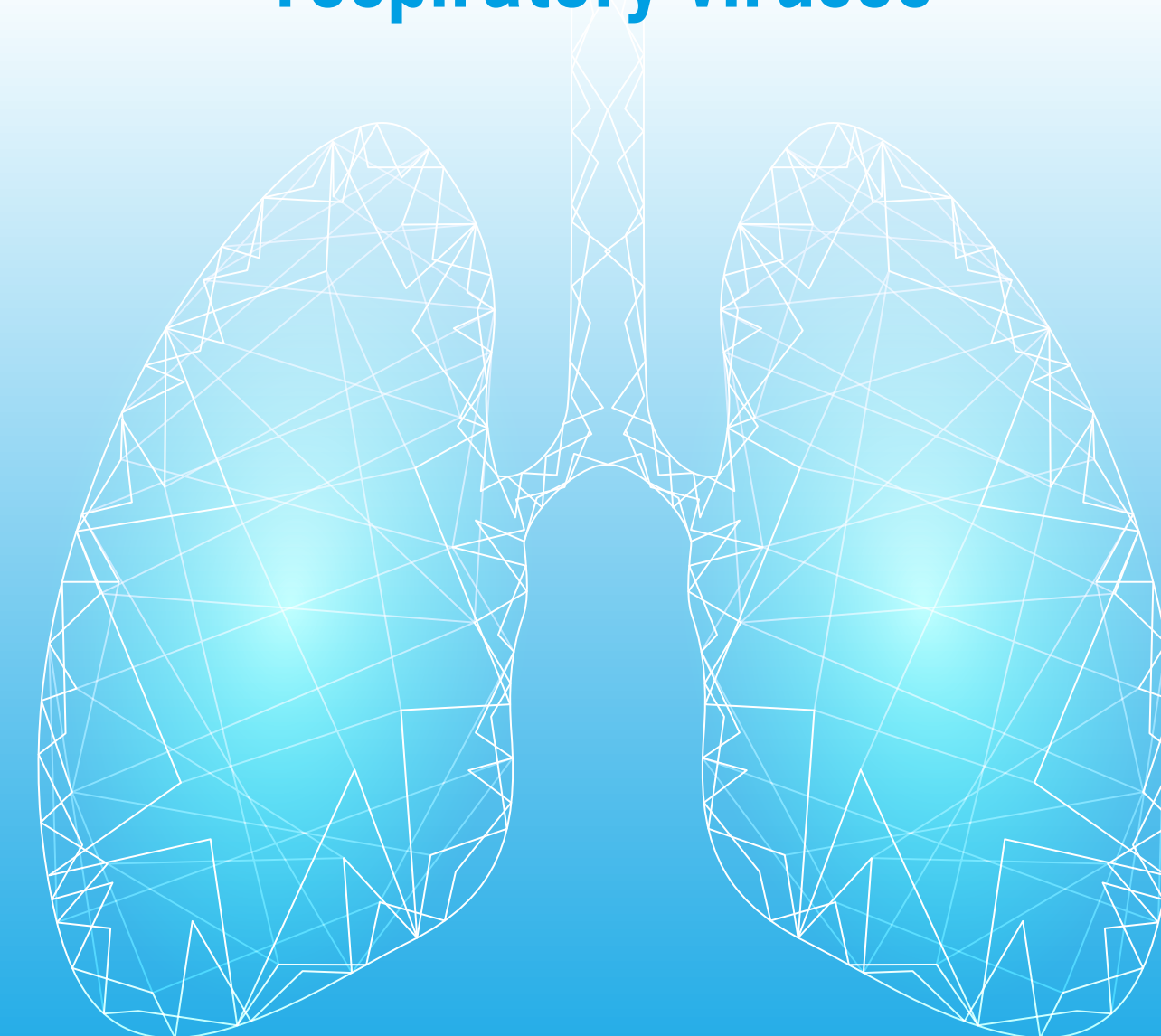
- Intended use/usefulness -

High coverage panel for the identification of the main pathogens causing acute respiratory infections, viruses and bacteria.

- 1.- Differential diagnostic test in patients with symptoms of upper respiratory tract infection .
- 2.- Simultaneous detection of 10 types of viruses, including SARS-CoV-2, and three bacterial genera for detection of possible co-infections.



Solutions for the molecular differential diagnosis of **SARS-CoV-2** and the main respiratory viruses



www.vitro.bio



C/ Luis Fuentes Bejarano 60 Ed. Nudo Norte (local3) 41020 Sevilla



Teléfono: +34 954 93 32 00



sales@vitro.bio



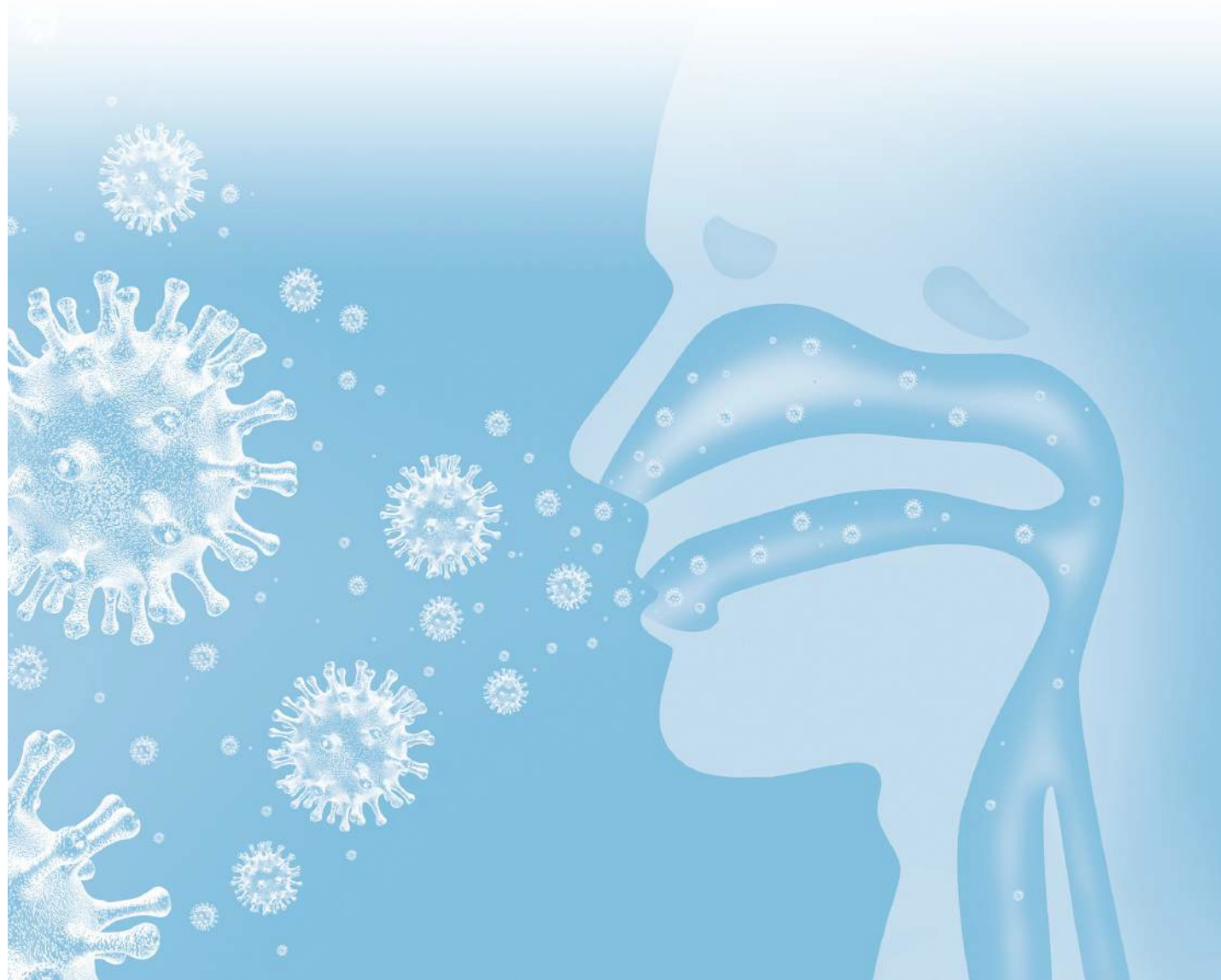
www.vitro.bio

Kits based on one-step multiplex Real-time RT-PCR:

- SARS-CoV-2 RT-PCR REF: MAD-003941M

- FLU-COVID RT-PCR REF: MAD-003942M

- RESPIPLEX (RSV-MPV-RhV) RT-PCR REF: MAD-003943M



- COMMON CHARACTERISTICS TO ALL KITS -



Quick results



Unified amplification protocols, possibility of multi-testing in a single assay



A single ready-to-use Mastermix, 100 tests, Available in lyophilized format*



Internal control and positive control included



Extracted RNA
✓ Nasopharyngeal and oropharyngeal exudates
✓ Bronchoalveolar lavage (BAL)



100% clinical specificity and sensitivity



Limit of detection of 10 copies/ reaction for all the pathogens



UNG enzyme included to avoid contamination



Open system compatible with the most widely used extraction systems and RT-PCR platforms available on the market



Successful participation in QCMD programs

* Only available in wet format nationally

- SARS-CoV-2 RT-PCR

In times of the SARS-CoV-2 pandemic.

- 1.- Confirmatory test in patients with suspected COVID-19.
- 2.- Monitoring the evolution of the infection once the PCR is confirmed.
- 3.- Screening of asymptomatic persons in direct contact with PCR-confirmed positive cases.

- FLU-COVID RT-PCR

In flu season and times of SARS-CoV-2 pandemic.

- 1.- Differential diagnostic test in patients with symptoms compatible with influenza or COVID-19.
- 2.- Differentiated detection between Influenza virus Type A and Influenza virus Type B.

- RESPIPLEX (RSV-MPV-RhV) RT-PCR

Identification of the most relevant viruses causing acute respiratory infections, not covered by the two previous kits.

- 1.- Differential diagnostic test in patients with symptoms of upper respiratory tract infection
- 2.- Used in conjunction with the SARS-CoV-2 RT-PCR kit and/or FLU-COVID RT-PCR for detection of possible co-infections

- SARS-CoV-2 RT-PCR Variant

- 1.- Detection of the three variants B.1.1.7, B1.1.7 and P.1 together with the wildtype strain.
- 2.- Identification of variant B1.1.7
- 3.- Used in conjunction with SARS-Cov-2 RT-PCR, FLU-COVID RT-PCR.